

LEGEND

- = Set 1/2" rebar cap No. 9967 or as noted
- = Found 1/2" rebar cap No. 8642/9967 or as noted
- = Subdivision Boundary
- - - = Sewer, Maintenance & Utility Easements
- = Property Line

EQUIPMENT & PROCEDURE

This survey was performed using a Nikon DTM-520 Total Station and Javad RTK Global Positioning System. The Field Traverse methods used are in conformance with WAC 332-130-090 and RCW 58.09.

BASIS OF BEARING

The Bearing of N71°03'54"W, along the North line of Lot 15, as per The Plat of REMINGTON HILL 3 1st addition, as recorded in Book 32 of Plats, pages 5 & 6 was used as the Basis of Bearing for this Subdivision.

SURVEYOR'S CERTIFICATE

This map correctly represents a survey made by me or under my direction in conformance with the requirements of the Spokane County Subdivision Ordinance.

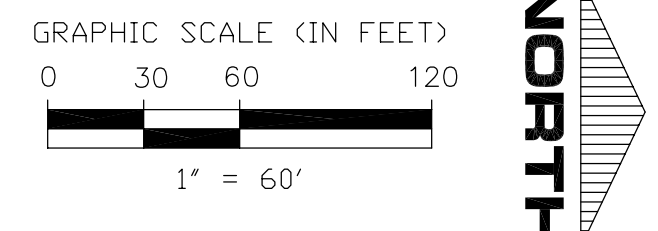
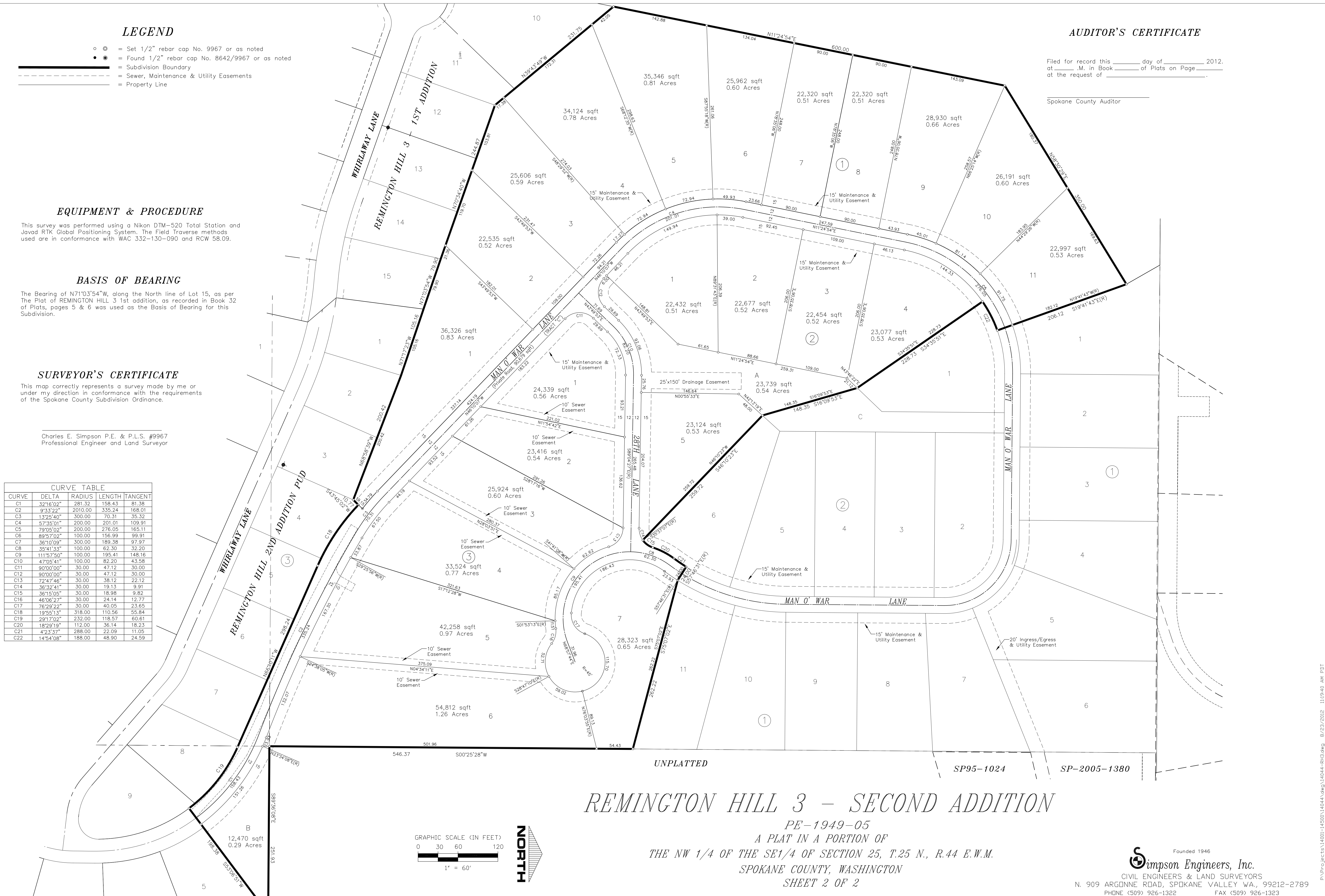
Charles E. Simpson P.E. & P.L.S. #9967
Professional Engineer and Land Surveyor

CURVE	DELTA	RADIUS	LENGTH	TANGENT
C1	32°16'02"	281.32	158.43	81.38
C2	9°33'22"	2010.00	335.24	168.01
C3	13°25'40"	300.00	70.31	35.32
C4	57°35'01"	200.00	201.01	109.91
C5	79°05'02"	200.00	276.05	165.11
C6	89°57'02"	100.00	156.99	99.91
C7	38°10'09"	300.00	189.38	97.97
C8	35°41'33"	100.00	62.30	32.20
C9	111°57'50"	100.00	195.41	148.16
C10	47°05'41"	100.00	82.20	43.58
C11	90°00'00"	30.00	47.12	30.00
C12	90°00'00"	30.00	47.12	30.00
C13	72°47'46"	30.00	38.12	22.12
C14	38°32'41"	30.00	19.15	9.91
C15	36°15'05"	30.00	18.98	9.82
C16	46°06'27"	30.00	24.14	12.77
C17	76°29'22"	30.00	40.05	23.65
C18	19°55'13"	318.00	110.56	55.84
C19	29°17'02"	232.00	118.57	60.61
C20	18°29'19"	112.00	36.14	18.23
C21	42°33'37"	288.00	22.09	11.05
C22	14°54'08"	188.00	48.90	24.59

AUDITOR'S CERTIFICATE

Filed for record this _____ day of _____ 2012.
at _____ M. in Book _____ of Plats on Page _____
at the request of _____

Spokane County Auditor



REMINGTON HILL 3 - SECOND ADDITION
PE-1949-05
A PLAT IN A PORTION OF
THE NW 1/4 OF THE SE 1/4 OF SECTION 25, T.25 N., R.44 E.W.M.
SPOKANE COUNTY, WASHINGTON
SHEET 2 OF 2

SP95-1024 SP-2005-1380

Founded 1946
Simpson Engineers, Inc.
CIVIL ENGINEERS & LAND SURVEYORS
N. 909 ARGONNE ROAD, SPOKANE VALLEY WA., 99212-2789
PHONE (509) 926-1322 FAX (509) 926-1323

P:\Projects\14001-14500\14044.dwg, 14044-RH3.dwg B/23/2012 11:19:40 AM PDT