

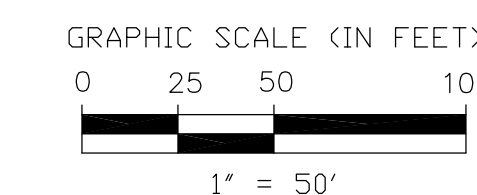
**AUDITOR'S CERTIFICATE**

Filed for record this \_\_\_\_\_ day of \_\_\_\_\_ 2016.  
 at \_\_\_\_\_ M. in Book \_\_\_\_\_ of Plats on Page \_\_\_\_\_  
 at the request of \_\_\_\_\_.

Spokane County Auditor

**LEGEND**

- = Set 1/2" rebar cap No. 9967
- = Found 1/2" rebar cap No. 9967 or as noted
- (R) = Radial Bearing
- = Subdivision Boundary
- - - = Border Easement
- - - = Utility Easement
- = Centerline Street
- ▨ = 30% Slope or Greater



LINE TABLE		
LINE	LENGTH	BEARING
L1	14.96	N04°07'28"E
L2	10.21	N27°40'34"E

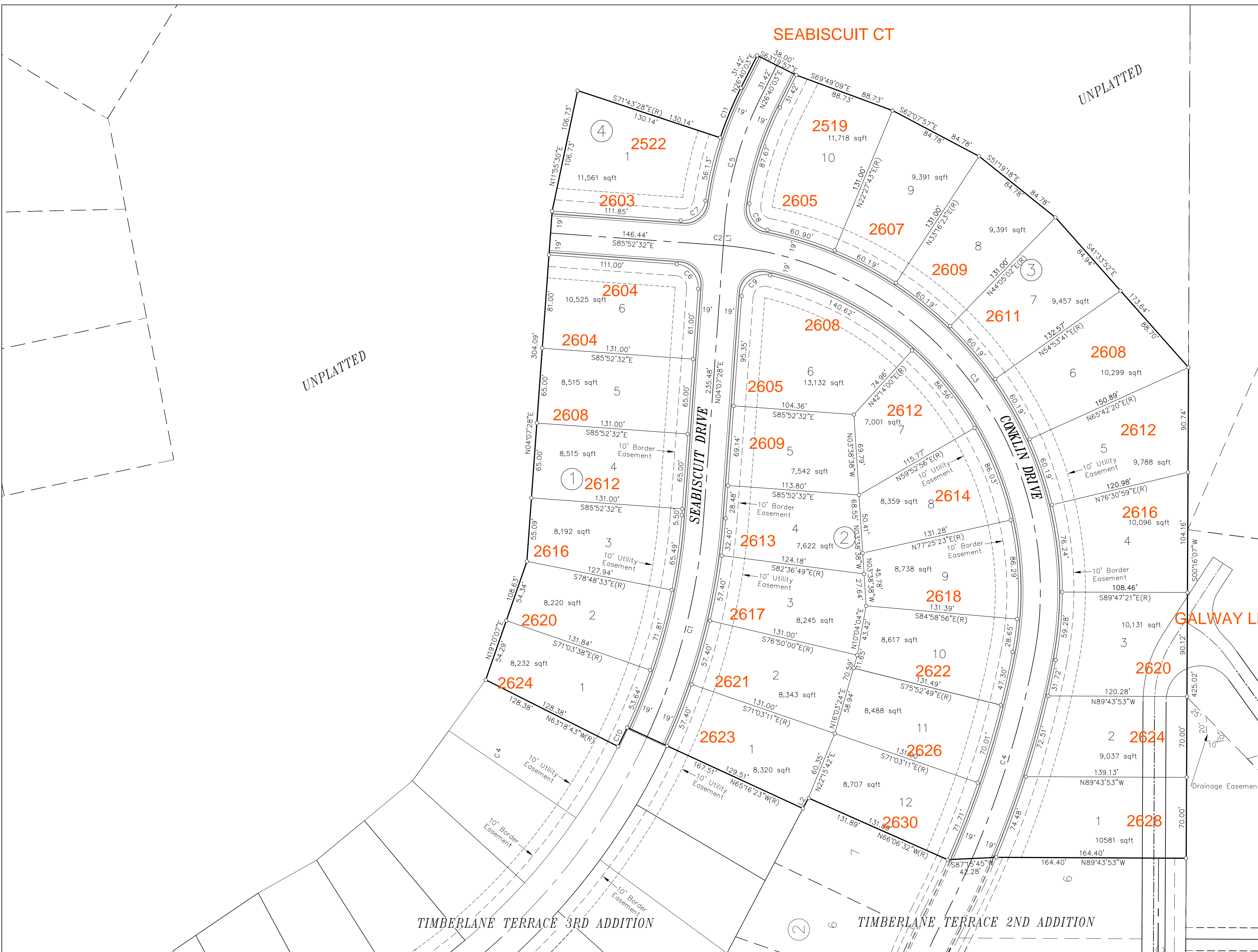
CURVE TABLE					
CURVE	DELTA	RADIUS	LENGTH	TANGENT	CHORD
C1	20°36'10"	550.00	197.77	99.97	196.71
C2	0°43'29"	300.00	3.79	1.90	3.79
C3	96°00'34"	300.00	502.70	333.24	445.92
C4	122°32'36"	850.00	183.88	92.30	183.52
C5	22°32'36"	300.00	118.04	59.79	117.28
C6	90°00'00"	20.00	31.42	20.00	28.28
C7	85°55'49"	20.00	30.00	18.63	27.26
C8	87°16'02"	20.00	30.46	19.07	27.60
C9	92°28'13"	20.00	34.71	23.60	30.52
C10	1°57'40"	531.00	18.17	9.09	18.17
C11	82°3'32"	319.00	46.72	23.40	46.68

**BASIS OF BEARING**

The Bearing of N61°47'04"E, along the North line of Tract A in the Plat of TIMBERLANE TERRACE - SECOND ADDITION was used as the Basis of Bearing for this Subdivision.

**EQUIPMENT & PROCEDURE**

This survey was performed using a Nikon DTM-520 Total Station and Javad RTK Global Positioning System. The Field Traverse methods used are in conformance with WAC 332-130-090 and RCW 58.09.

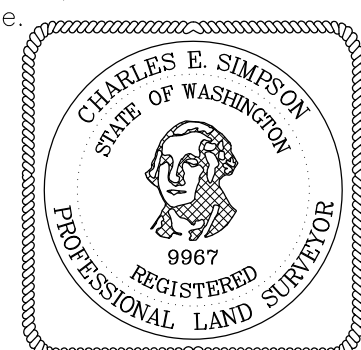


**TIMBERLANE TERRACE  
FOURTH ADDITION**

PE-1950-05  
 A PLAT IN A PORTION OF  
 THE SW 1/4 OF SECTION 25, T.25 N., R.44 E.W.M.  
 SPOKANE COUNTY, WASHINGTON  
 SHEET 2 OF 2

**SURVEYOR'S CERTIFICATE**

This map correctly represents a survey made by me or under my direction in conformance with the requirements of the Spokane County Subdivision Ordinance.



Charles E. Simpson P.E. & P.L.S. #9967  
 Professional Engineer and Land Surveyor

**Simpson Engineers, Inc.**  
 Founded 1946  
 CIVIL ENGINEERS & LAND SURVEYORS  
 N. 909 ARGONNE ROAD, SPOKANE WA., 99212-2789  
 PHONE (509) 926-1322 FAX (509) 926-1323