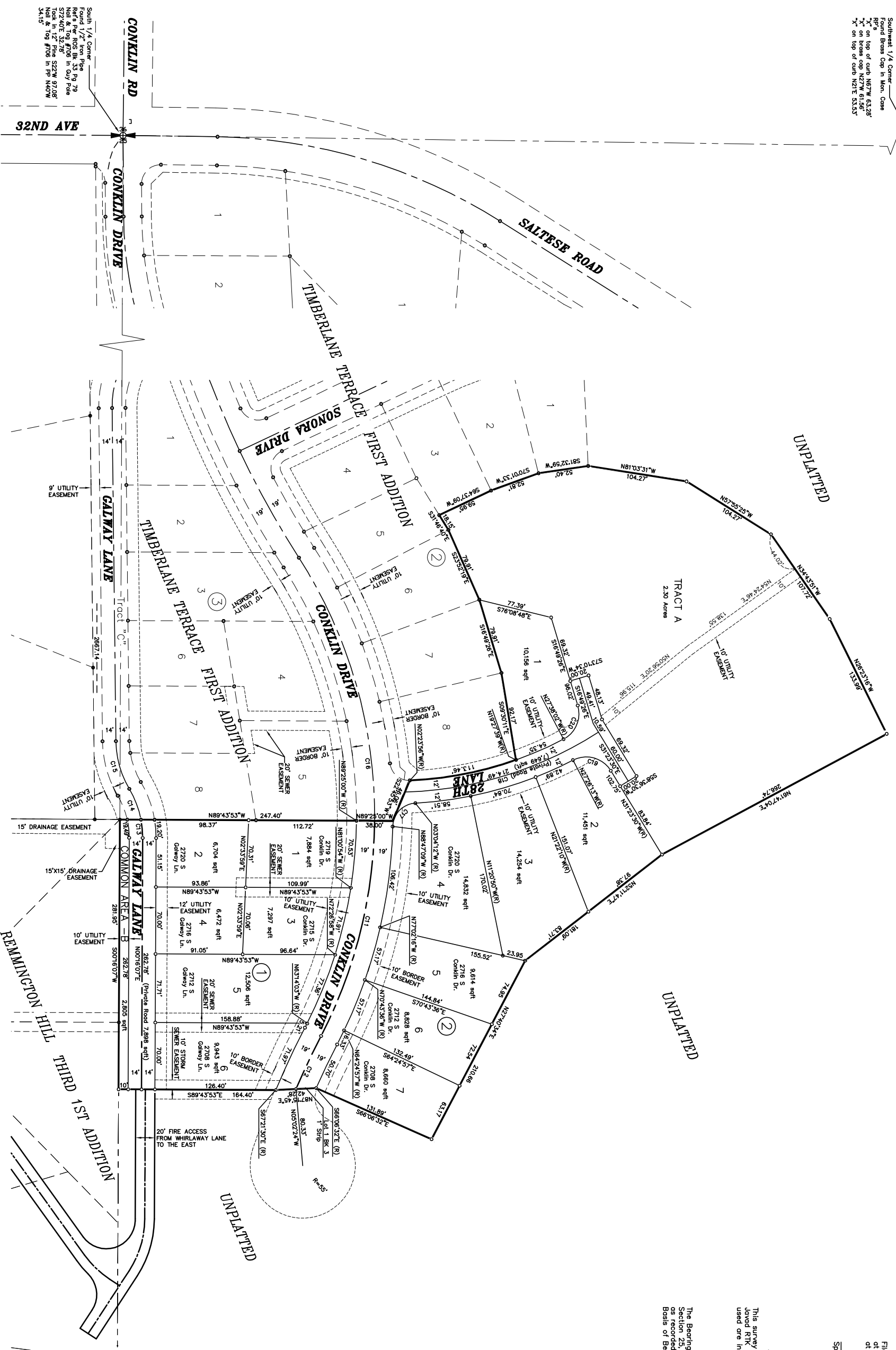


Southwest 1/4 Corner  
Found Brass Cap in Mon. Case  
R.P.#  
"x" on top of curb N62°17'W 63.28'  
"x" on brass cap N27°W 61.58'  
"x" on top of curb N21°E 53.53'



Filed for record this \_\_\_\_\_ day of \_\_\_\_\_ 2013.  
at \_\_\_\_\_ M. in Book \_\_\_\_\_ of Plots on Page \_\_\_\_\_  
at the request of \_\_\_\_\_

Spokane County Auditor \_\_\_\_\_

EQUIPMENT & PROCEDURE

This survey was performed using a Nikon DTM-520 Total Station and Javad TRK Global Positioning System. The field notes were prepared and used are in conformance with WAC 322-130-090 and RCW 58.09.

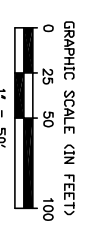
BASIS OF BEARING

The Bearing of N00°16'07"E, along the West line of the SE 1/4 of Section 25, as per the Plat of REMINGTON HILL, 3 - FIRST ADDITION, as recorded in Book 32 of Plats, pages 5 and 6, was used as the Basis of Bearing for this Subdivision.

CURVE TABLE with columns: CURVE LENGTH, RADIUS, DELTA, TANGENT. Lists data for curves C11 through C20.

LEGEND

- No. 1/2" rebar cap
● No. 1/2" rebar cap No. 8642/9887 or cap No. 8642/9887 or (R) as noted
(R) as noted Bearing
\* Distance shown on plat of Remington Hill
--- Subdivision Boundary
--- Border Easement
--- Utility Easement
--- Centerline Street



TIMBERLANE TERRACE - 2ND ADDITION

PE-1950-05  
A PLAT IN A PORTION OF  
THE S1/2 OF SECTION 25, T.25 N., R.44 E.W.M.  
SPOKANE COUNTY, WASHINGTON  
SHEET 2 OF 2

SURVEYOR'S CERTIFICATE

This map correctly represents a survey made by me or under my direction in conformance with the requirements of the Spokane County Subdivision Ordinance.

Charles E. Simpson P.E. & P.L.S. #9967  
Professional Engineer and Land Surveyor



Simpson Engineers, Inc.  
Civil Engineers & Land Surveyors

Founded 1946  
N. 909 ARDUNNE ROAD, SPOKANE, WA, 99212-2789  
PHONE (509) 926-1322 FAX (509) 926-1323